



PRESENTED BY GOSEAWOLF

#SHIPLIFE

Open to students aged 13-18, this program is ideal for high school students wishing to pursue an active, outdoor career in fields such as marine biology and conservation.

It is a hands-on, immersion experience for students who want a challenging and engaging program focused on marine sciences, shipfaring, aquatic & terrestrial species protection, conservation and sustainability.



When one man, for whatever reason, has the opportunity to lead an extraordinary life, he has no right to keep it to himself.

- Jacques Cousteau

A LETTER TO PARENTS

We believe Green Camp students are one of tomorrow's greatest hopes - academically prepared today to be environmental stewards tomorrow. We are proud to partner with Green Camp, which not only serves our own children, but also shares our strong commitment to experiential conservation and preservation.

Our marine program offers students an opportunity to observe and participate in ongoing conservation efforts, allowing students to see the difference they can make for our shared oceans through study and scientific research in the field. This kind of research is critical to biodiversity preservation and conservation across the world.

By combining a 10-week intensive marine science program, hands-on extramural activities, and a two-week expedition in a floating classroom setting, participants learn from top marine scientists and environmentalists while contributing to real-time conservation efforts.

Along with staging academic fieldwork, students will also gain SCUBA certification, learn onboard navigation practices, experience traditional Indonesian culture, and participate in survival & ropes training with our friendly and knowledgeable staff. The program takes place across the archipelago - from beautiful Bali to the parks of Komodo, the welcoming island of Sulawesi to the pristine waters of Raja Ampat.



The Seawolf, a PADI certified liveaboard, is crewed and staffed by a team of expert SCUBA trainers and by our Indonesian family - who have over 75 years combined sailing experience.

We've been extremely honored to work alongside environmental education, conservation and entertainment organizations like Conservation International, Caitlin Seaview Survey and One World One Ocean.

Our hearts are burdened by tomorrow's oceans. We strive to be environmental stewards and have witnessed firsthand the profound impact life at sea has had on our own children.

Together, we can achieve so much good through the thoughtful, creative education of our world's most most precious resource: students like yours.

We look forward to showing these gifted students a majestic world waiting in all its magnificence to meet them.

Matthew, Athena, Rowen & Atlas Downes

Education is the most powerful weapon
you can use to change the world.

- Nelson Mandela

THE PROGRAM

WHAT?

All field research currently takes place in Komodo, Indonesia. Students examine the marine & terrestrial environments of Komodo National Park, a UNESCO World Heritage site. The waters around the island feature exceptionally high marine biodiversity under threat from destructive commercial fishing practices. Students will learn about the issues and conservation efforts in the area before making research dives to record both the beauty & devastation in Komodo.

WHERE?

Bali ↔ Labuan Bajo ↔ Moyo Island ↔ Komodo

WHEN?

Summer 2014

eLearning: June

Green School campus: July

At Sea: August

Before setting sail and beginning field research, students study marine ecology & become coral experts with Ocean Classrooms, our innovative eLearning/online applied science partner.



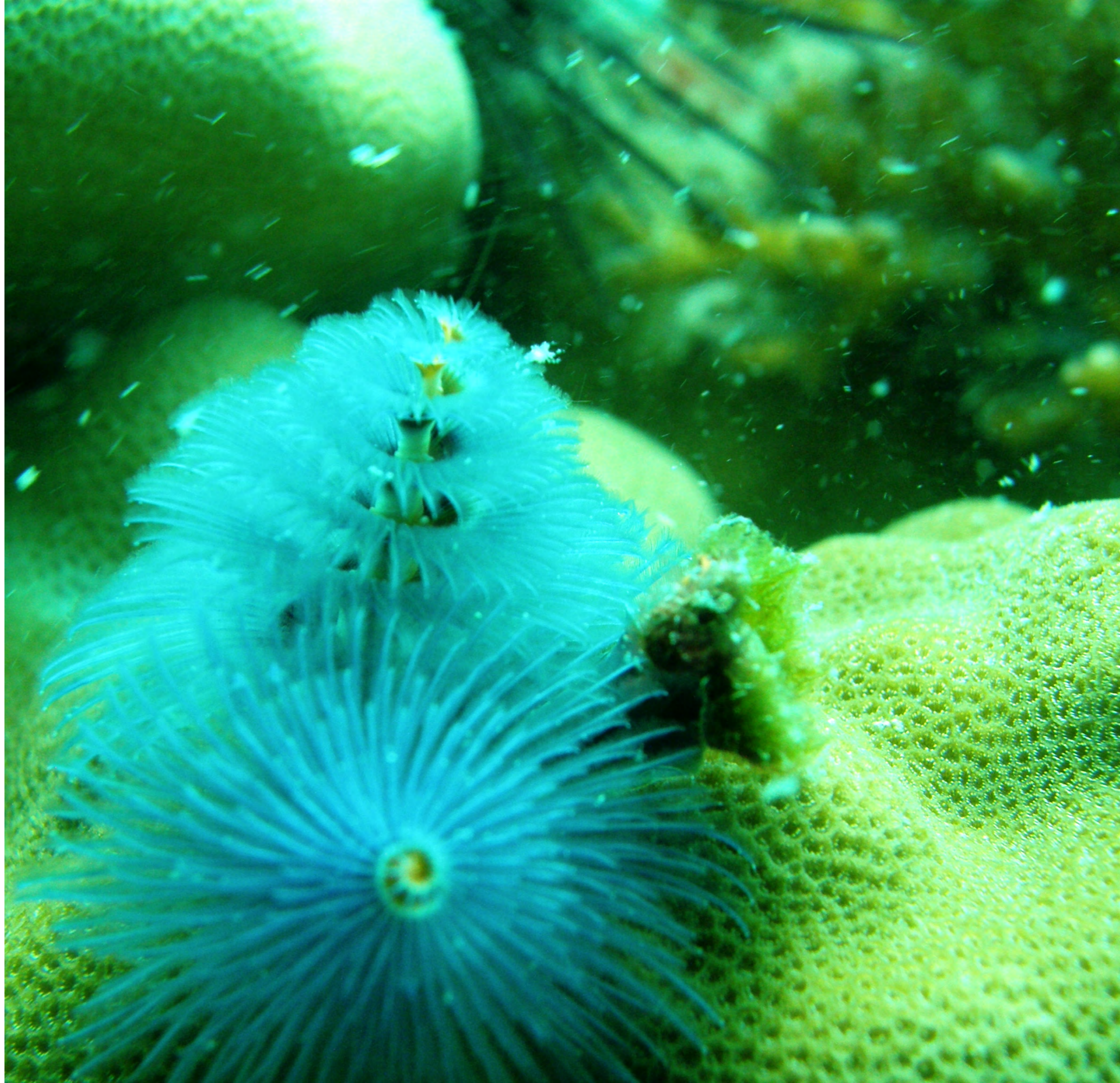
This component is designed for motivated self-study and usually takes approximately 10-15 weeks to complete.

We will assist students with the eLearning process with weekly crew building meetups and hands-on activities. Students will have an understanding of marine ecology before departure.

Both the eLearning and field research components require students to draw on STEM concepts in addition to the arts, humanities, and social sciences.

It is our collective and individual responsibility to preserve and tend to the environment in which we all live.

- Dalai Lama





Man cannot discover new oceans unless he has the courage to lose sight of the shore.

- André Gide

Students will gain SCUBA certification through PADI. Typically this will be either Open Water Diver certification or advanced training for those students who are ready for specialty courses.

All research dives are guided by our resident PADI Divemaster, and all courses are taught by our PADI MSDT.

Professional Association of Diving Instructors (PADI) is the world's largest recreational diving membership and diver training organization.

PADI courses are performance-based diving programs. At the introductory level, courses emphasize practical knowledge, safety and motor skills. The foundations of diving physics, physiology and chemistry are also explored.

In addition to scientific study, inquiry, discussion, and analysis, and comprehensive SCUBA training, each expedition offers students many leadership and confidence-building opportunities. Navigation, sails & ropes training, and daily writing exercises are just some of the experiential academic activities offered onboard.

Academic credit shall be arranged through Green School Bali. Students who successfully complete both the marine ecology curriculum and field research expedition will receive Letters of Completion and, when appropriate, Letters of Recommendation.

Look deep into nature, and
then you will understand
everything better.

- Albert Einstein





REGISTRATION CHECKLIST

1. Download the registration packet online and complete it.
2. Write a 500-word essay on an ocean topic of your choice.
3. Submit these documents to info@goseawolf.com

Sea School operates on a rolling admission basis.

Applications are reviewed on a first-come, first-serve basis until each expedition is full. Each cohort is limited to 12 spots.

We recommend that you register in advance of your preferred date.

Please note that all Sea School students must hold a valid passport in order to participate.

There's still time, but not a lot,
to turn things around.

- Sylvia Earle



ACCOMMODATIONS

Students participate in eLearning from home before enjoying a 14-day field research expedition onboard the Seawolf.

The ship accommodates 12 students, 4 chaperones and full crew. Rooms are semi-private with ensuite bathrooms.

Roommate requests will be honored when possible.





- Meals are included in your program cost. Both continental and cooked breakfasts are served depending on each day's scheduled activities. Lunches are served buffet-style onboard or packed for land-based day trips. Beach BBQs are often enjoyed for dinner.
- When weather forces us indoors, students dine & play in our restaurant & lounge. Snacks are always available in this space, which also features an extensive lending library, flat-screen TV, Bose stereo system and Playstation.
- Our cook specializes in both Eastern and Western cuisine. Students will have the opportunity to sample many traditional Indonesian foods - including dishes from our home port of Bira, Sulawesi.
- We offer many vegan and vegetarian choices. Please let us know in advance if you have special dietary concerns or restrictions*
- Each student bedroom has a work desk & lockable storage area.

*Eggs, fish, dairy, wheat and nuts are regularly used in our galley. If your student is allergic to one or more of these foods, please discuss it with us prior to registering.



- Bed linens, basic toiletries, and beach & bath towels are provided. Students are also given a choice of firm or down pillow and standard size twin bunks or double bed (shared).
- Laundry service is provided twice a week.
- Sorry, no pets are allowed onboard.

Sea School participants share space with up to 25 people of all nationalities. Lectures are held daily on the main deck. The lower deck, upper sun deck and restaurant & lounge are perfect hang-out spots!

Quiet hours are observed from 10pm to 6am daily, except when nighttime activities are on the itinerary.

Plan to form lifelong friendships. Despite the close quarters, there are always many friendly & adventurous people onboard!

Ships are the closest things
to dreams that hands have
ever made.

- Robert Rose



HEALTH & SAFETY

We continuously refine our safety policies and procedures to minimize risk to our guests and personnel. The GoSeawolf team takes immense pride in our safety record, and maintain our commitment to it through careful and consistent evaluation of our training, personnel, policies and equipment. Safety is paramount onboard the Seawolf.

Students are asked to disclose all pre-existing medical conditions, medications, and medical histories. This enables us to provide a safe learning environment onshore and at sea. Our vessel possess all the necessary equipment for safe navigation and emergency situation response. Our ship is fully ISM licensed.





While onboard the Seawolf, students have access to First Aid, CPR & EMT trained staff, onboard recompression chamber, and through our affiliation with DAN (Divers Alert Network), transportation to nearby medical facilities in the unlikely event of an emergency.

The ship maintains 24-hour access to a network of physicians trained to provide remote medical care & advice.

Our English and Indonesian speaking staff take guest safety very seriously and, along with the Captain and trip chaperones, stay abreast of student wellbeing around-the-clock.





